

River Foss Society



Community Water Management Project

within the Dales to Vales river network

Dales to Vales River Network

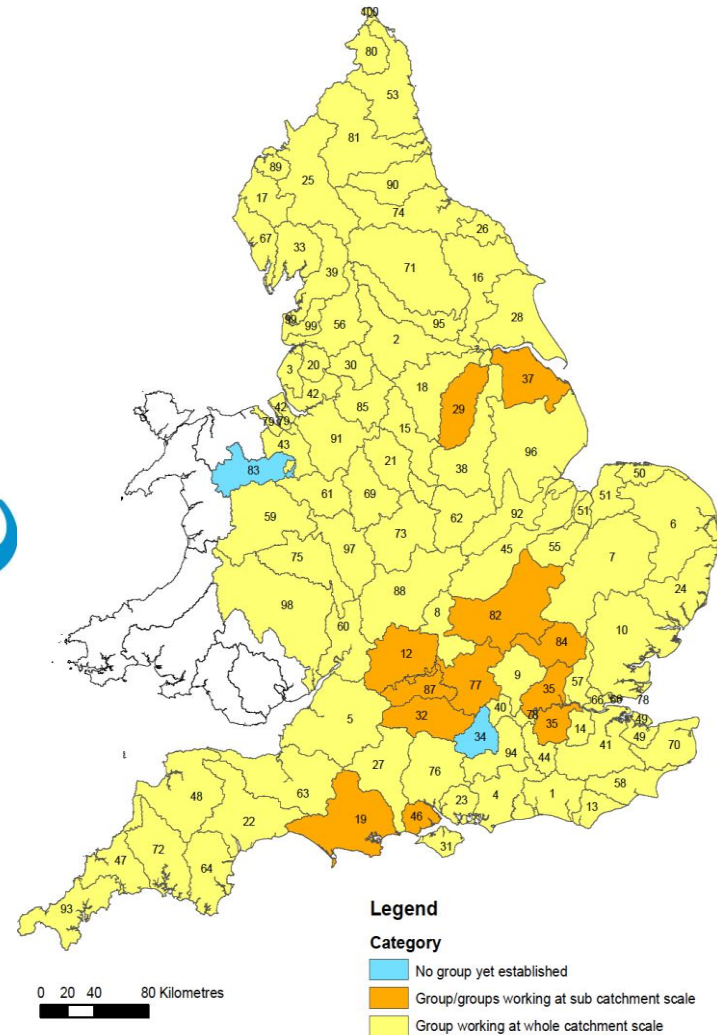
- Established in Nov 2013 – 2 project officers, job-sharing a part-time post.
- Project Board with key partners
- Wider Network of community groups, local authorities, user groups
- Links with other partnerships – Local Nature Partnerships, Local Enterprise Partnerships etc.



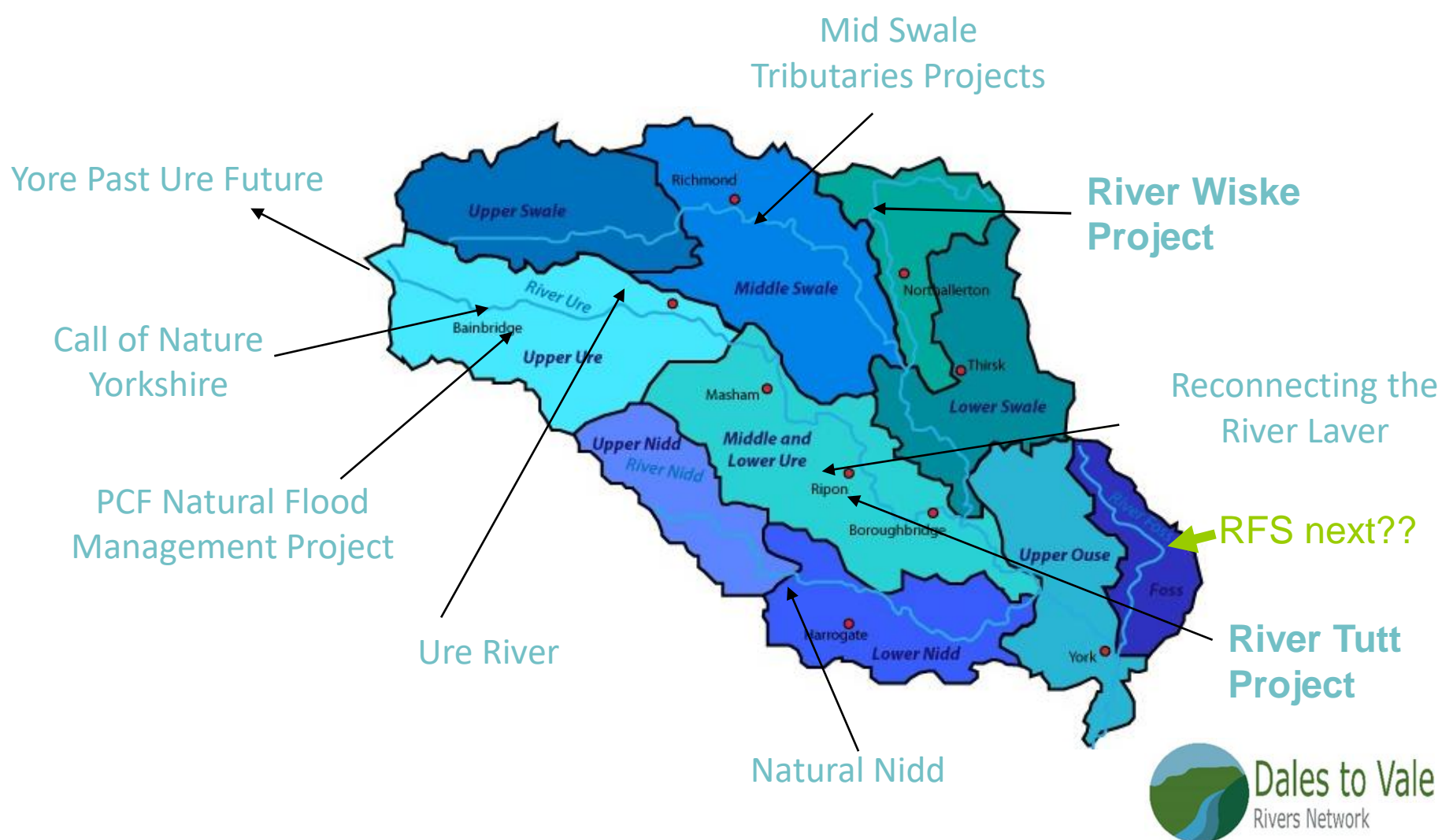
Catchment Based Approach (CaBA)



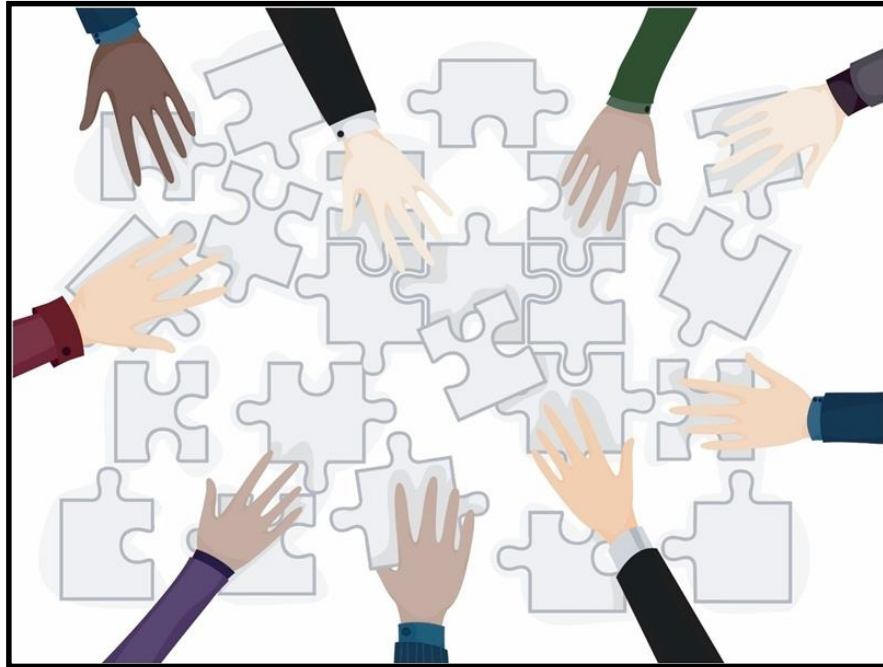
Catchment partnerships established in all 108 WFD catchments across England



Dales to Vale Rivers Network Projects



The power of a crowd...



Citizen science or
Volunteer monitoring.

Simple data

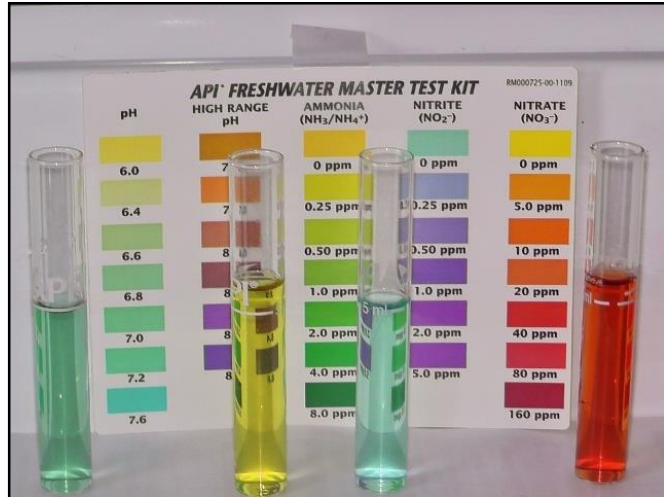
Lots of people +
Lots of places +
Lots of times =

Lots of information





Monitoring our Rivers



Water chemistry

- Temperature
- Nitrate
- Phosphate
- Turbidity



River Foss - Water Framework Directive

- 6 Waterbodies – 3 natural + 3 heavily modified
- Ecological Status – 0 bad, 0 poor, 6 moderate, 0 good, 0 high
- Chemical status – 6 good
- 23 “Reasons for not achieving good” – 4 agriculture, 4 domestic general pollution, 3 urban + transport, 10 water industry

